



University of
**Southern
Queensland**



Business Development & Commercialisation Team (iLAuNCH)

Candidate Booklet



The University of Southern Queensland acknowledges the traditional custodians of the lands and waterways where the University is located. Further, we acknowledge the cultural diversity of Aboriginal and Torres Strait Islander peoples and pay respect to Elders past, present and future.

We celebrate the continuous living cultures of First Australians and acknowledge the important contributions Aboriginal and Torres Strait Islander people have and continue to make in Australian society.

The University respects and acknowledges our Aboriginal and Torres Strait Islander students, staff, Elders and visitors who come from many nations.

Contents

5	Welcome from UniSQ	
6	Welcome from iLAuNCH Advisory Board Chair	
7	iLAuNCH	
10	About UniSQ	
11	Our strategic plan	
12	Our academic plan	
13	Our research plan	
14	Our values & Our People	
15	Role descriptions	
21	How to apply	
23	Our locations	



Welcome to the University of Southern Queensland community



Thank you for your interest in this role and for considering the University of Southern Queensland (UniSQ) as a possible destination for the next step of your career.

As Deputy Vice-Chancellor (Research and Innovation), one of my important roles is to build the research leadership within the University to ensure that we can inspire our students and staff to deliver outstanding research with real impact for our industry and community partners.

Our research vision is to be recognised as a world-class, research-intensive university, renowned for industry engagement and community impact in a dynamic research ecosystem. In 2022, UniSQ was ranked in the Top 500 in the Times Higher Education World University Rankings, demonstrating our strong culture for delivering quality research across all disciplines.

We are delighted to lead the Innovative Launch, Automation, Novel Materials, Communication and Hypersonics (iLAUNCH) program, in partnership with the Australian National University and the University of South Australia. Through iLAUNCH we will drive Australia's sovereign space capability.

We are seeking specialists in business development and commercialisation to generate funding opportunities to support the growth of this exciting program and to lead and develop the commercialisation culture of the University.

Professor John Bell
Deputy Vice-Chancellor (Research and Innovation)

A message from the Chair of the iLAuNCH Advisory Board



The University of Southern Queensland (UniSQ), under the Australian Government's Trailblazer Universities Program, will lead the innovative collaboration iLAuNCH with key university and industry partners over the next four years.

Ambitious goals and objectives have been set for core development projects across the multi-party venture, with all projects sitting at the higher Technology Readiness Levels (TRL). This will allow rapid translation and commercialisation of developing technologies as iLAuNCH pursues both Australia's modern manufacturing objectives and contributes to the nation's space industry growth goals of 20,000 jobs and a \$12Bn market size by 2030.

UniSQ is seeking to appoint a range of exceptional individuals, bringing leadership, engineering, educational, business development and other relevant support capabilities, to form the energised team that will drive iLAuNCH towards the ambitious technology, commercialisation and manufacturing agenda that UniSQ and its partners have committed to.

The iLAuNCH Advisory Board looks forward to working with the iLAuNCH team at UniSQ to establish a new paradigm for university-industry research collaborations.

Dr Rosalind (Ros) Dubs
Chair of the iLAuNCH Advisory Board

iLAUNCH

Addressing a critical gap in Australia's sovereign space capability by accelerating development of a sovereign Australian launch capability.

As part of the University Research Commercialisation Action Plan, the Trailblazer Universities Program is supporting six universities, including the University of Southern Queensland (UniSQ), to supercharge prioritised research under Australia's National Manufacturing Priorities and develop closer ties with industry partners.

Under the Trailblazer Universities Program, iLAUNCH is a \$180 million UniSQ-led collaboration between 23 industry organisations and three universities. iLAUNCH will build Australia's sovereign space capability by addressing critical gaps and accelerating the development of a space launch manufacturing sector comprising commercially viable civil rockets, rocket test and launch facilities, rapid satellite manufacturing, communication technologies and integrated sensing systems through industry research, commercialisation, and manufacturing. iLAUNCH will allow UniSQ, the Australian National University (ANU) and the University of South Australia (UniSA) to consolidate and coordinate their space manufacturing research and commercialisation activities.

It will facilitate a step-change for each of the university partners in their ability to work in partnership with industry to translate research outcomes for commercial application and to address industry needs in an agile and responsive manner. Significantly, the concentration of research and development activity in the regional city of Toowoomba and surrounding areas, as well as regional nodes in New South Wales and South Australia will have a profound impact, socially and economically, on regional Australia. The success of iLAUNCH will showcase the ability of regional areas to host and develop major manufacturing sovereign capability, supported by a comprehensive training, education, and outreach program. This holistic approach to developing a vibrant research and development ecosystem will contribute to attracting and retaining talent, as well as securing a pipeline of highly skilled workforce to regional Australia and create a legacy in Space for the benefit of Australia and the Australian community.



Australian
National
University

Institute
for Space



University of
Southern
Queensland



University of
South Australia

iLAUNCH

The iLAUNCH program comprises three pillars:



Core Commercialisation Projects

- Industry pull
- Shift from low-mid TRL to high TRL
- IP translation from universities to industry
- Launch, Launch Manufacturing, and Payload Technologies



iLAUNCH Space Accelerator (ISA)

- Open to whole of Space industry
- First Australian launch industry focussed accelerator
- Short-term project funding
- Commercialisation training



Future Skills Development

- All elements co-designed with industry
- Inspire school aged children
- VET pathway initiation and development
- Micro-credentialling
- Bachelor of Space Engineering

iLAUNCH Commercialisation Projects

The iLAUNCH core commercialisation projects will span across six distinct areas:



Additive Manufacturing

- improve regenerative rocket nozzle efficiencies by up to 12%
- reduce repair time of composite structures in space and defence from days down to hrs
- produce high dimensional tolerance satellite optics



Materials and Processing

- 30% weight saving and 25% cost saving will be realised for composite rocket fuel tanks
- multilayer coatings for space-based optics will enable high-power lasers for debris detection and clearance



Hypersonics & Flight Diagnostics

- allowing rapid progression towards flight ready hardware
- creates a new business opportunity in airborne observations



Rocket Manufacturing

- manufacture of solid and hybrid rocket fuel
- manufacture of efficient and robust injectors during high altitude flight
- creating supply opportunities in both the civil space and defence sectors



Rocket Launch

- launch rails and launch pads using sustainable geopolymers concrete with 40% better utilisation of infrastructure
- launch site identification and development



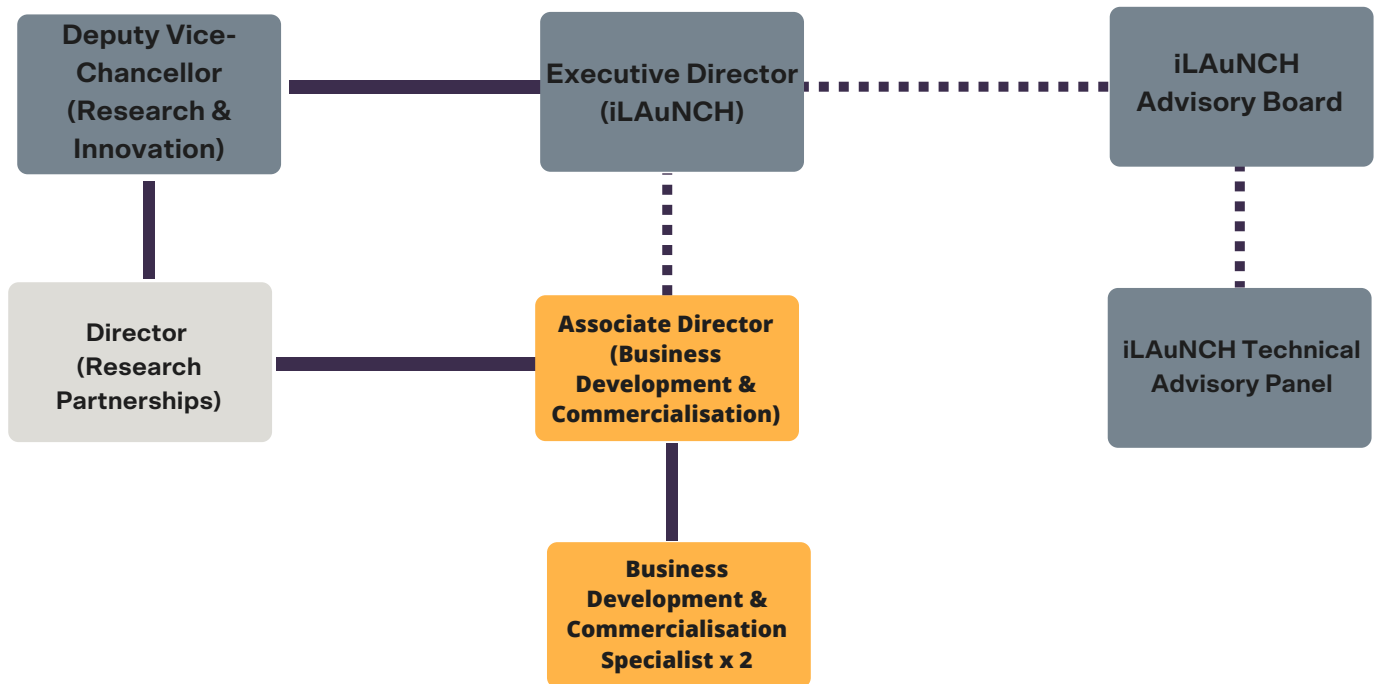
Satellites, Communications and Sensors

- sensor detector controllers for 20 earth observations,
- 20 commercial space travellers will be wearing smart sensors

iLAUNCH within UniSQ

iLAUNCH has been established as a centre within UniSQ's Research and Innovation Division, and is affiliated with the Institute for Advanced Engineering and Space Sciences (IAESS).

The below image is representative only of the iLAUNCH Governance structure only and is not a full organisation structure.



The Institute for Advanced Engineering and Space Sciences

UniSQ's Institute for Advanced Engineering and Space Sciences (IAESS) delivers space and defence-related research, with strengths in developing hypersonic propulsion systems, advanced materials, astrophysics, rocketry and diagnostics, all of which align with the core activities of iLAUNCH.

IAESS is home to world-class infrastructure and equipment, including the Mount Kent Astronomical Observatory, Australia's longest duration hypersonic wind tunnel and a rocket fuel manufacturing laboratory and a robotic filament winder cell, as well as one of Australia's largest dedicated composite materials manufacturing and testing facilities.

Find out more [here](#).

Business Development & Commercialisation Team

Working closely with the iLAUNCH Executive Director, the iLAUNCH Business Development and Commercialisation team will guide commercialisation activities of iLAUNCH researchers and industry partners and be responsible for growing the partner network and funding opportunities for launch and launch manufacturing. Under the leadership of the Director (Research Partnerships), the team will also contribute to the development of new IP and commercialisation strategies and related culture change at UniSQ and the iLAUNCH partner universities.

About the University of Southern Queensland

The University of Southern Queensland (UniSQ) continues to build strongly on its reputation of providing education excellence, focused research on issues vital to regions, and engaged service to the community. The University is justifiably proud of its longstanding commitment to quality and excellence and its reputation as a leader in providing accessible and equitable education pathways and supportive and inclusive learning environments.

Since its establishment, the University has evolved from a single institute of adult learning to a recognised leader in online and blended education, providing education worldwide from three physical locations (Toowoomba, Springfield and Ipswich) as well as online. The University is an international player in focused areas of research and innovation, with a number of outreach hubs and national and international education partners.

The strengthening of UniSQ's online and face-to-face teaching programs, new academic program development, and the escalation of research activities, mean UniSQ's emphasis is on further developing its presence as Australia's leading regional university and a major contributor to education in the rapidly growing western corridor of south-east Queensland.

UniSQ at a glance

25 746

students

100 000+

alumni

115+

disciplines of study

Our graduates ¹



#1

in Australia
Undergraduate
starting salary



First Generation

52% of UniSQ students report being first in their family to attend University



Social Equity

31% of UniSQ students are from low socioeconomic or disadvantaged backgrounds



Undergraduate full-time employment

76.7% of UniSQ graduates are employed full-time 4 months after completing their study



Post-graduate

31% of UniSQ students are from low socioeconomic or disadvantaged backgrounds

Our research ²



18 fields rated 'well above world standard'

30 fields rated 'at or above world standard'

¹ Good Universities Guide 2022

² Excellence in Research for Australia (ERA) 2018

Our strategic plan

We will be renowned for innovation and excellence in education, student experience, research and engagement.

Our strategic plan is brought to life at a time of increasing disruption in our global community. Building upon our signature strength of flexible, innovative education, we will continue to focus on student success as we transform our teaching and research to grow our student population and research capacity.

We will achieve national and international recognition for our flagship areas of agriculture, health, space and defence, and regional development.

The University will grow, be innovative, engaged and future-focussed, embracing the opportunity to develop a culture of disruption. We will harness our reputation as Australia's leading regional University for the development and benefit of our stakeholders.

Our values

Respect. Integrity. Excellence

Discover more about our values at unisq.edu.au/about-usq-values-culture

Mission

Building on our strengths as Australia's leading regional university, we will:

- create and share knowledge.
- transform lives.
- solve the problems that matter to our world.

To do this, we will engage locally and globally to translate ideas and knowledge for the benefit of our communities. Our work will have regional relevance, national significance and global impact.

Our strategic objectives

Our impact

build a better future with our communities

Our connections

translate ideas and knowledge into opportunities

Our people

be innovative, engaged and forward-thinking

Our places

create vibrant hubs of education and research

Our key performance areas

- Growing our student population and broadening participation in higher education
- Being the University of choice across our regions
- Delivering an outstanding student experience
- Growing the quality and quantity of research outcomes
- Contributing to the sustainable development of our communities
- Maintaining our capacity for investment into our future.

Learn more about our [Strategic Plan](#)

Our academic plan

Delivering quality and excellence in programs, innovative learning and teaching, and the student experience.

In pursuit of our mission to create and share knowledge, transform lives and solve the problems that matter to our world, the University of Southern Queensland is driving key strategies to bolster our reputation as a provider of contemporary academic offerings. We are committed to three core academic strategies, which are to:

Create a sustainable and diverse program portfolio

Create a sustainable and diverse program portfolio of offerings to provide relevant education for domestic and international students in our regions and beyond.

Embrace innovative learning and teaching practices

Embrace innovative learning and teaching practices to maximise learning opportunities and support students to become global citizens in a challenging and rapidly changing world.

Curate student experiences that are positive, productive and rewarding

Curate student experiences that are positive, productive and rewarding and intentionally designed to provide all students with curricular and co-curricular opportunities to enhance and extend their learning opportunities.

These strategies are underpinned by:

- A renewed emphasis on our virtual and physical environments for education.
- A systematic approach to supporting, developing, nurturing, recognising and rewarding quality and innovation in education.
- A comprehensive infrastructure that supports efficient and effective planning, decision making and operational processes (data, systems, technology, policies and practices)



Be inspired by globally recognised research

The University of Southern Queensland's research is a catalyst for industry growth, community prosperity and wellbeing through focussed, high-quality research and research training.

UniSQ researchers are working directly with local communities, industry and our international partners to form strong and enduring partnerships that deliver tangible benefits and real impact.

From building supersonic rocket engines to improving regional cancer survival; forging ahead in agricultural automation with driverless tractors to pioneering the future of space exploration and playing a pivotal role in the universal hunt for habitable planets, UniSQ is at the forefront of innovation in research.

We are committed to providing high-quality supervision, embedding students in research-active teams, fostering a culture of innovation, and providing dynamic research experiences for our future research leaders.

The University's flagship research areas

Space and Defence

- Astrophysics, Hypersonics and Rocketry, and Materials Engineering.

Agriculture

- Climate Science, Drought Mitigation and Adaptation, Crop Health, Agricultural Technology and Environmental Science.

Health

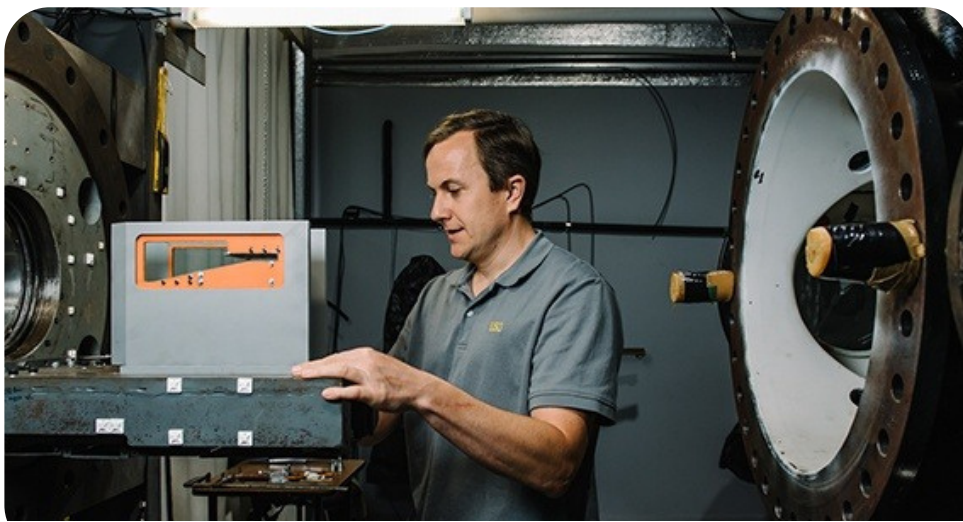
- Sport and Exercise Science, Mental Health, Nursing and Allied Health.

Regional Development

- Agribusiness, Economic Development, and Cultural Heritage.

UniSQ's world-class research institutes, centres and faculties are home to unique state-of-the-art facilities enabling our researchers to deliver a broad range of research outcomes across multiple disciplines.

Learn more about our cutting edge research at unisq.edu.au/research



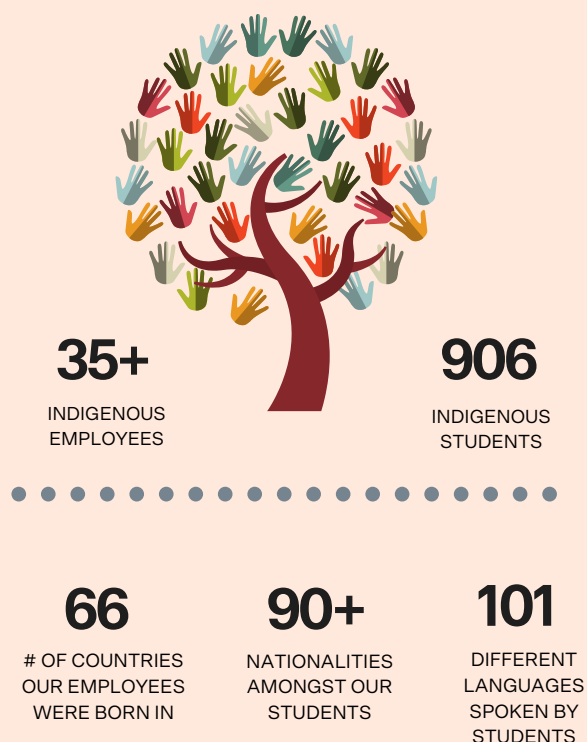
Our values and people

At the University of Southern Queensland (UniSQ), our work is bound by purpose and underpinned by a culture that is values-driven, forward thinking and grounded in scholarship. We share a common goal of transforming lives through outstanding learning and teaching, positive student outcomes and experiences, and practical research that delivers real impact to our regions.

We believe that our strength lies in individual differences. With a culture that embraces diversity and promotes inclusion, we foster an environment where our employees and students can contribute to their full potential while being accepted for who they are.

The University community consists of approximately 1,800 professional, academic and casual staff, with many of these recognised as award winners for academic, research, professional and community involvement.

The University offers a range of different ways of working and connecting across our physical and virtual spaces to meet the needs of our students, partners and community. We value diversity and aim to foster an inclusive environment that is underpinned by our values and champions, embraces and respects differences. We support and encourage applications from women (particularly for senior and non-traditional roles), Aboriginal and Torres Strait Islander peoples, people with disabilities, mature



age workers, people of all cultures, sexual orientations, and genders.

With an increasingly diverse workforce, we understand that careers may be placed on hold or limited throughout many life circumstances. We recognise the importance of considering achievement relative to opportunity and encourage you to outline factors such as career breaks, gender, family, or other factors which may have resulted in a limited career progression.

Our core values of Respect, Integrity and Excellence guide us in our daily actions and decision making.

Discover more about UniSQ's people and culture at www.unisq.edu.au/about-unisq

Associate Director (Business Development & Commercialisation)

iLAUNCH

Role purpose

Under the lead of the Director (Research Partnerships), you will be instrumental in the industry engagement and commercialisation culture of the University.

You will be an integral member of the iLAUNCH team, working closely with the Executive Director (iLAUNCH).

The position will be required to:

- Work closely with the Director (iLAUNCH) to maintain and manage relationships with the iLAUNCH program's core partners to ensure a high level of satisfaction and long-term engagement.
- In collaboration with the Executive Director (iLAUNCH), lead the development and delivery of the iLAUNCH program's Space Accelerator and Fast-Track Commercialisation Fund, including the development and maintenance of a pipeline of projects, funding, and partners.
- Work closely with members of iLAUNCH and external partners to lead the development of new research partnerships and identification of funding opportunities to support the growth of the program's research, development and commercialisation activities.
- Guide the identification, documentation and protection of iLAUNCH Project IP as well as the development of protection and commercialisation strategies for iLAUNCH IP.
- Deliver the Venture Capital Portfolio Strategy to raise Venture Capital funding for the iLAUNCH program's commercialisation projects.
- Work collaboratively with iLAUNCH researchers and the equivalent Research Partnerships teams at iLAUNCH partner universities to build funding applications and provide strategic advice regarding industry trends, establishment of a bid consortium and bid business cases, which support the business development activities for iLAUNCH partners.
- Work effectively with other members of the USQ Research Partnerships team to identify opportunities, support relevant initiatives, follow-up on business leads, and support the establishment of long-term external relationships, as well as contribute to the development of new IP and commercialisation strategies and related culture change initiatives.
- Develop comprehensive research partner strategies which add value through developing strong working relationships and partnering with industry.
- Lead, manage and develop team members to grow the iLAUNCH program's capacity to meet current and future business development and commercialisation opportunities.
- Provide leadership within iLAUNCH and the University of Southern Queensland's Research and Innovation Division to build a productive and positive workplace.

Associate Director (Business Development & Commercialisation)

iLAuNCH

Role purpose cont.

- Work collaboratively and in partnership with the University of Southern Queensland's Office of Research to ensure the iLAuNCH program's formal contractual engagement and post-contractual relationship management is delivered in close alignment with broader university processes.
- As a leader within the University community, demonstrate the highest possible standards of professional and personal conduct, both as an individual and as part of a team, commit to regular engagement in personal, professional and team development, and demonstrate behaviour consistent with the key capabilities outlined in the USQ People Capability Framework.

Selection Criteria

Within the context of the University's purpose, vision, and core values, and in direct connection to the key responsibilities, it is expected that the Associate Director (Business Development & Commercialisation) will possess the following:

- Postgraduate qualifications in a relevant discipline area, with experience in a higher education, research, commercialisation, government or similar environment, or an equivalent combination of relevant * education, training and/or experience.
- Demonstrated high level experience in establishing and maintaining long-term industry relationships and commercialisation activities across a range of disciplines and activities.
- Space, defence and/or manufacturing industry engagement expertise and evidence of successful development of project and funding proposals.

- Demonstrated contract literacy and understanding the process of and issues arising in contract negotiations as they relate to university industry collaboration and commercialisation.
- Extensive high-level experience in the identification, evaluation protection and commercialisation of IP, preferably in or related to the space, defence and/or manufacturing sectors.
- Financial literacy and demonstrated high-level experience in the development of business cases for research partnerships and commercialisation endeavours.
- Outstanding communication skills with the demonstrated high level ability to establish credibility, and use interpersonal skills to build and maintain relationships with a large range of internal and external stakeholders from all levels of an organisation.
- Proven ability to lead, coach and mentor others, including an ability to direct effective work of a team with a high and consistent workload (prioritising competing demands).
- Outstanding and proven ability to lead, coach and mentor others, including an ability to direct effective work teams at all levels across both an organisation and multiple organisations.
- Alignment with the core University values of Respect, Integrity, and Excellence.

* Achievement relative to opportunity is actively considered as part of recognising and valuing the diversity of the career and life experiences of our people.



Business Development & Commercialisation Specialist

iLAuNCH

Role purpose

Under the lead of the Associate Director (Business Development & Commercialisation), and working closely with university partners the Australian National University and the University of South Australia, you will be instrumental in developing linkages and fostering commercialisation activities with current and future iLAuNCH Partners.

You will also work with the Director Research Partnerships and the Associate Director (Business Development and Commercialisation) on developing the industry engagement and commercialisation culture of the University.

The position will be required to:

- Work closely with the Associate Director (Business Development & Commercialisation) to maintain and manage relationships with the iLAuNCH program's core partners to ensure a high level of satisfaction and long-term engagement.
- In collaboration with the Associate Director (Research Partnerships), play a key role in the delivery of the iLAuNCH program's Space Accelerator and Fast-Track Commercialisation Fund, including the development and maintenance of a pipeline of projects and partners.
- Work with members of iLAuNCH and external partners on the development of new research partnerships and identification of funding opportunities to support the growth of the program's research, development and commercialisation activities.
- Under the guidance of the Associate Director work on the identification, documentation and protection of iLAuNCH Project IP as well as the development of protection and commercialisation strategies for iLAuNCH IP.
- Work with iLAuNCH researchers and the equivalent Research Partnerships teams at iLAuNCH partner universities to build funding applications and provide strategic advice regarding industry trends, establishment of a bid consortium and bid business cases, which support the business development activities for iLAuNCH partners.
- Work effectively with other members of the University of Southern Queensland's Research Partnerships team to identify opportunities, support relevant initiatives, follow-up on business leads, and support the establishment of long-term external relationships, as well as contribute to the development of new IP and commercialisation strategies and related culture change initiatives.
- Work collaboratively and in partnership with the University of Southern Queensland's Office of Research to ensure the iLAuNCH program's formal contractual engagement and post-contractual relationship management is delivered in close alignment with broader university processes.
- As a member of the University community, demonstrate the highest possible standards of professional and personal conduct, both as an individual and as part of a team, commit to regular engagement in personal, professional and team development, and demonstrate behaviour consistent with the key capabilities outlined in the USQ People Capability Framework.

Business Development & Commercialisation Specialist

iLAUNCH

Selection Criteria

Within the context of the University's purpose, vision, and core values, and in direct connection to the key responsibilities, it is expected that the Business Development & Commercialisation Specialist will possess the following:

- Postgraduate qualifications in a relevant discipline area, with experience in a higher education, research, commercialisation, government or similar environment, or an equivalent combination of relevant education, training and/or experience*.
- Demonstrated achievement in establishing and maintaining long-term industry relationships and commercialisation activities across a range of disciplines and activities.
- Space, defence and/or manufacturing industry engagement expertise and evidence of successful development of project and funding proposals.
- Demonstrated contract literacy and understanding the process of and issues arising in contract negotiations as they relate to university industry collaboration and commercialisation.
- Extensive experience in the identification, evaluation protection and commercialisation of IP, preferably in or related to the space, defence and/or manufacturing.
- Financial literacy and experience in the development of business cases for research partnerships and commercialisation endeavours.
- Outstanding communication skills with the demonstrated ability to build and maintain relationships with a large range of internal and external stakeholders from all levels of an organisation.
- Ability to work independently and as a member of a team with a high and consistent workload (prioritising competing demands).
- Alignment with the core University values of Respect, Integrity, and Excellence.

* Achievement relative to opportunity is actively considered as part of recognising and valuing the diversity of the career and life experiences of our people.



Terms of employment

Term of appointment

The initial term of appointment will be for up to four years with the opportunity to reapply for renewal.

Remuneration

Associate Director (Business Development & Commercialisation)

A competitive executive remuneration package will be negotiated with the successful candidate.

Business Development & Commercialisation Specialist

Total remuneration range \$146,060 to \$161,902 pa (includes salary range of \$123,418 to \$136,804 pa, employer super contributions of 17% and annual leave loading)

Benefits

The University will make employer contributions of up to 17% to a nominated super fund.

UniSuper is proud to be UniSQ's super fund of choice and is the only super fund dedicated to higher education and research professionals.

Annual, long service and other leave are provided in accordance with UniSQ's policies and procedures.

Relocation costs, including travelling and removal costs, for the successful appointee and family members will be met by the University.

- The University also offers a range of other benefits, including:
- Salary packaging options on portable electronic devices, financial advice, professional memberships, airport lounge membership etc.
- Flexible work arrangements including an extensive range of leave options and a parental support program.
- Free full gym membership and access to a range of health and medical services, including a free annual flu vaccine.
- Employee assistance programs.
- Exclusive UniSQ discounts including banking, mortgage broking, travel and accommodation, private health and more.

Discover more about [working at UniSQ](#).

Pre Employment Screening

To ensure the suitability, integrity and identity of the University's workforce, a pre-employment screening process will be undertaken for those persons recommended for appointment.

Appointment will be conditional upon the completion and satisfactory outcomes of this process, which will include:

- reference checks.
- confirmation of identity.
- verification of qualifications and professional body accreditations/registrations.
- confirmation of previous employment.
- criminal history check.

Application and Selection Process

UniSQ has engaged executive search firm Slade Group to assist with the appointment of this team in parallel with the public advertisement of the position.

Slade Group will support UniSQ in identifying the widest possible field of qualified candidates and will assist in the assessment of candidates against the requirements each role.

In submitting your application, please include the following:

Candidate Statement/Cover Letter

A brief Candidate Statement (no more than four pages) outlining:

- Your vision for the role
- Your suitability for the role, drawing on the key skills and capabilities you could bring.

Curriculum Vitae

- Full name, home address, confidential email address, telephone contact details Nationality and citizenship
- Positions held, dates, scope of responsibilities and key achievements Details of education and qualifications and the dates awarded
- Any other relevant information, such as involvement in professional and community activities, industry connections etc

Referees

Full contact details of three referees (including your current Manager / Supervisor) who have agreed to supply confidential references if requested by the University and/or Slade Group.

Referees will only be contacted only after prior consultation with you. It is your responsibility to ensure referees are willing to provide reports when contacted.

Availability

An indication of the earliest date you would be able to commence in the role.

Enquiries

For a confidential discussion about the roles and UniSQ, please contact:

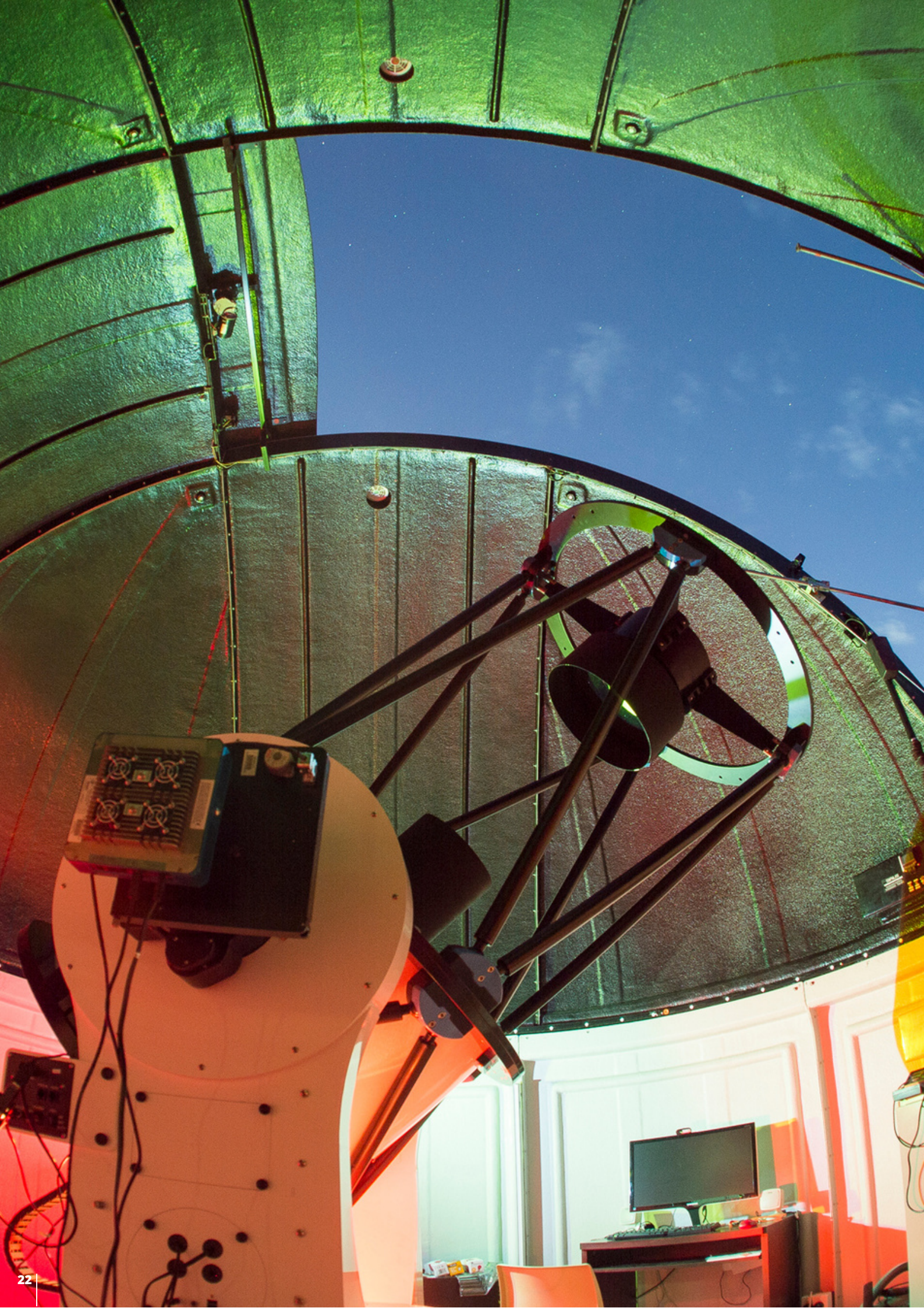
Andrew Barr
Senior Consultant
Slade Group
E: abarr@sladegroup.com.au
M: +61 400 762 660

Submitting your application

To submit your application, please visit the Slade Group website
<http://www.sladegroup.com.au/ilaunch/>

The University reserves the right to invite applications, make an appointment by invitation and/or to not make an appointment.

Slade Group



Toowoomba

The main campus of UniSQ is located in Toowoomba on the beautiful Darling Downs in South East Queensland.

The Toowoomba campus has over 4000 students enrolled on-campus and offers three residential colleges, television studios, a state-of-the-art library, performing arts theatre, concert hall, science and engineering laboratories, modern lecture theatres, 24 hour access computer laboratories, a sport and recreation centre and many sporting groups. The campus is also home to Australia's largest traditional Japanese Garden and the award winning Gumbi Gumbi Gardens.

As Australia's second largest inland city with a regional population of approximately 170,000 and projected growth of some 40% by 2032, Toowoomba offers a cosmopolitan mix of cultures, backgrounds and history and has a reputation for quality of lifestyle and education.

Just a 90 minute drive west from the state's capital Brisbane, Toowoomba exudes history and tradition — a proud foundation city that champions its Queensland heritage.

In addition to affordable housing, the city offers comprehensive private and state educational options, an extensive health support network, and excellent recreational facilities. Toowoomba also has a rich heritage and culture and features an eclectic mix of casual and metropolitan style cafés, with superb award winning fine dining. There has never been a more exciting time to live, work and play in the region.



Ipswich

UniSQ's Ipswich campus is on a heritage site in one of Australia's oldest cities.

UniSQ Ipswich's leafy campus has grand vistas across the city and a graceful mix of historic and modern buildings, including a stunning library featuring a living rainforest.

Home to the University's Health and Law degrees, UniSQ Ipswich includes custom built paramedical training facilities, clinical nursing laboratories, a midwifery simulation centre, a sport and exercise clinic, and a new legal clinic.

UniSQ Ipswich is located approximately 45 minutes from Brisbane and just over an hour from the Gold Coast. A city in its own right, Ipswich is one of the fastest growing areas in Queensland, offering an ideal lifestyle, combining heritage charm with the benefits of modern and exciting metropolitan living.



Springfield

Opened in 2006, UniSQ Springfield is a fresh, modern campus located in the heart of one of Queensland's fastest-growing regions. The South West corridor boasts the highest number of current and future land developments in South East Queensland.

UniSQ Springfield is a vibrant, modern campus located just 20 minutes from the Ipswich CBD, 35 minutes from Brisbane city with connecting public transport and 50 minutes from the Gold Coast.

A hub for digital production and performance, the campus includes a state-of-the-art television studio, radio station and rehearsal spaces, as well as collaborative teaching rooms, brand new laboratories for science and engineering, and fitness and recreation centres.

Our world class flight simulator, supporting our aviation degrees, is the first of its kind in Queensland.

Close industry links in the thriving community offer exceptional opportunities for all who make it their home and is the perfect alternative to the Brisbane CBD.





University of
Southern
Queensland

unisq.edu.au